

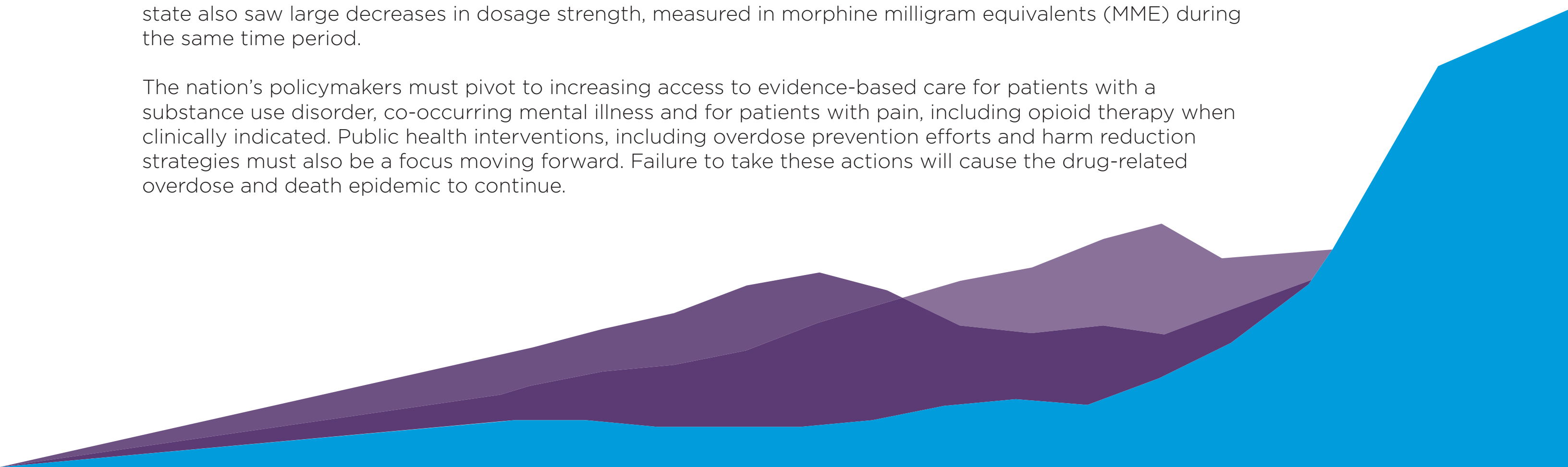


Opioid prescriptions decrease for 10th consecutive year

More Americans than ever are dying from a drug-related overdose

While the nation's prescription opioid supply has decreased for the 10th consecutive year, more Americans than ever are dying from [drug-related overdose](#)—primarily illicitly manufactured fentanyl, fentanyl analogues, methamphetamine and cocaine. Overdose and death related to heroin and prescription opioids still remains too high. New national data from leading health data clearinghouse IQVIA show that every state in the nation saw a large decrease of prescription opioids dispensed from retail pharmacies between 2011-2020. Every state also saw large decreases in dosage strength, measured in morphine milligram equivalents (MME) during the same time period.

The nation's policymakers must pivot to increasing access to evidence-based care for patients with a substance use disorder, co-occurring mental illness and for patients with pain, including opioid therapy when clinically indicated. Public health interventions, including overdose prevention efforts and harm reduction strategies must also be a focus moving forward. Failure to take these actions will cause the drug-related overdose and death epidemic to continue.



Total opioid prescriptions has decreased by more than 44% between 2011-2020



State	2011	2012	2013	2014	2015	2016	2017	2018	2019	2020	% Change 2011-2020	% Change 2019-2020
AK	557,967	546,396	532,174	510,399	478,056	454,444	400,699	333,751	278,725	265,516	-52.4%	-4.7%
AL	6,459,489	6,799,812	6,810,195	6,482,594	5,926,378	5,718,047	5,170,871	4,658,828	4,253,960	4,029,020	-37.6%	-5.3%
AR	3,301,708	3,502,615	3,486,488	3,572,478	3,348,152	3,291,992	3,067,038	2,713,125	2,526,993	2,380,420	-27.9%	-5.8%
AZ	5,733,883	5,616,265	5,362,706	5,372,257	5,132,391	4,827,490	4,263,792	3,624,933	3,327,191	3,090,787	-46.1%	-7.1%
CA	21,984,054	22,302,532	21,612,793	21,016,834	19,050,290	17,828,349	15,874,675	14,061,254	12,483,679	11,377,636	-48.2%	-8.9%
CO	4,085,141	4,135,158	4,035,263	3,959,838	3,738,556	3,459,557	3,047,458	2,633,543	2,379,103	2,248,080	-45.0%	-5.5%
CT	2,495,451	2,502,412	2,415,581	2,374,760	2,218,705	1,975,953	1,718,081	1,536,618	1,398,993	1,283,757	-48.6%	-8.2%
DC	412,993	413,636	400,467	387,706	349,121	318,812	288,637	260,221	209,691	174,089	-57.8%	-17.0%
DE	896,008	850,678	851,969	843,611	793,145	748,902	644,098	578,886	498,150	452,812	-49.5%	-9.1%
FL	16,730,886	15,506,359	15,182,741	14,836,798	14,030,815	14,094,215	13,095,533	11,467,243	10,295,688	9,921,669	-40.7%	-3.6%
GA	8,979,299	9,187,711	8,911,135	8,635,223	8,249,393	8,178,329	7,572,753	6,758,229	6,350,123	5,997,137	-33.2%	-5.6%
HI	804,750	806,673	787,969	745,388	685,844	641,683	572,890	491,718	431,809	385,473	-52.1%	-10.7%
IA	1,965,929	2,254,951	2,193,050	2,185,894	2,067,585	1,945,087	1,724,694	1,511,788	1,348,251	1,247,761	-36.5%	-7.5%
ID	1,486,855	1,534,052	1,507,231	1,487,800	1,413,087	1,348,373	1,239,429	1,107,310	1,048,985	996,157	-33.0%	-5.0%
IL	7,985,511	8,262,798	8,020,564	7,813,175	7,406,234	7,174,721	6,493,511	5,698,396	5,268,571	4,928,925	-38.3%	-6.4%
IN	7,020,556	7,286,915	6,998,099	6,408,311	5,967,652	5,685,451	5,102,958	4,431,736	4,096,346	3,882,980	-44.7%	-5.2%
KS	2,585,776	2,675,020	2,622,534	2,587,229	2,418,736	2,328,673	2,158,349	1,980,488	1,828,244	1,715,352	-33.7%	-6.2%
KY	5,787,060	5,417,705	4,797,820	4,694,396	4,334,957	4,133,758	3,769,469	3,447,088	3,262,360	3,107,822	-46.3%	-4.7%
LA	5,247,215	5,340,915	5,334,699	5,155,565	4,735,748	4,638,147	4,243,715	3,793,001	3,459,683	3,156,063	-39.9%	-8.8%
MA	4,407,762	4,442,800	4,323,636	4,150,284	3,798,257	3,371,548	2,896,451	2,566,450	2,344,557	2,193,355	-50.2%	-6.4%
MD	4,293,671	4,281,442	4,113,042	4,056,572	3,798,321	3,585,532	3,186,401	2,779,464	2,577,951	2,408,020	-43.9%	-6.6%
ME	1,251,743	1,208,513	1,148,091	1,099,640	1,018,375	895,539	744,721	646,215	599,680	545,244	-56.4%	-9.1%
MI	9,763,369	9,937,060	9,751,048	9,660,121	8,925,472	8,418,965	7,538,420	6,287,542	5,574,756	5,246,027	-46.3%	-5.9%
MN	3,237,135	3,273,932	3,162,439	3,095,115	2,857,460	2,566,787	2,193,055	1,932,342	1,707,278	1,596,497	-50.7%	-6.5%
MO	5,595,530	5,838,931	5,621,821	5,465,068	5,086,741	4,869,716	4,404,238	3,884,641	3,566,783	3,345,808	-40.2%	-6.2%
MS	3,315,214	3,451,664	3,405,426	3,311,668	3,145,009	3,015,336	2,673,451	2,188,032	1,938,338	1,845,910	-44.3%	-4.8%
MT	962,622	996,284	957,554	902,721	827,638	792,552	685,496	595,741	558,491	526,554	-45.3%	-5.7%
NC	9,417,059	9,989,197	9,863,960	9,582,300	8,981,503	8,474,340	7,483,144	6,436,341	6,048,245	5,697,142	-39.5%	-5.8%
ND	494,817	507,690	506,935	496,083	458,352	423,178	370,262	325,372	292,226	273,699	-44.7%	-6.3%
NE	1,309,068	1,404,728	1,394,266	1,368,283	1,269,126	1,231,337	1,113,380	1,014,662	926,832	877,622	-33.0%	-5.3%
NH	1,067,807	1,086,670	1,055,906	1,017,778	958,788	832,221	682,320	614,477	548,120	506,928	-52.5%	-7.5%
NJ	5,383,373	5,297,251	5,186,754	5,110,383	4,923,734	4,612,063	3,921,094	3,415,966	3,133,954	2,859,055	-46.9%	-8.8%
NM	1,674,080	1,564,606	1,455,772	1,454,741	1,420,771	1,324,919	1,157,281	1,008,363	925,928	858,225	-48.7%	-7.3%
NV	2,776,070	2,772,556	2,558,528	2,554,118	2,441,071	2,343,315	2,165,920	1,686,604	1,565,064	1,525,141	-45.1%	-2.6%
NY	10,860,289	10,974,036	9,926,365	9,309,091	9,125,851	8,628,646	7,711,760	6,822,592	6,248,559	5,704,869	-47.5%	-8.7%
OH	11,580,771	11,126,391	10,634,213	10,238,946	9,454,746	8,670,857	7,423,787	6,243,137	5,712,547	5,330,070	-54.0%	-6.7%
OK	4,556,061	4,815,024	4,692,914	4,246,162	3,993,156	3,803,067	3,452,207	3,115,771	2,643,980	2,409,747	-47.1%	-8.9%
OR	3,994,332	3,933,642	3,803,435	3,720,690	3,409,838	3,115,759	2,705,506	2,387,688	2,215,562	2,076,460	-48.0%	-6.3%
PA	10,446,328	10,573,480	10,344,963	10,091,704	9,539,732	8,826,630	7,447,248	6,380,748	5,699,370	5,199,714	-50.2%	-8.8%
RI	853,730	868,158	797,057	743,805	653,773	601,936	515,485	434,250	398,495	366,357	-57.1%	-8.1%
SC	4,621,384	4,974,806	4,951,963	4,870,399	4,542,490	4,307,251	3,912,693	3,446,686	3,132,131	2,951,170	-36.1%	-5.8%
SD	527,850	576,086	575,192	585,047	568,971	529,373	479,644	422,619	381,632	362,766	-31.3%	-4.9%
TN	9,254,227	9,123,434	8,556,084	8,234,764	7,813,039	7,393,620	6,629,074	5,725,802	5,149,444	4,771,221	-48.4%	-7.3%
TX	19,645,366	20,169,265	19,516,996	18,934,584	16,805,856	16,337,795	14,978,124	13,705,957	12,902,238	11,701,471	-40.4%	-9.3%
UT	2,477,180	2,493,000	2,467,276	2,396,190	2,268,731	2,196,371	2,024,134	1,855,298	1,718,349	1,643,132	-33.7%	-4.4%
VA	6,208,215	6,490,494	6,318,917	6,077,315	5,614,391	5,248,774	4,430,238	3,769,850	3,500,538	3,251,937	-47.6%	-7.1%
VT	439,831	446,794	428,557	422,468	400,537	362,626	315,598	259,887	228,934	212,207	-51.8%	-7.3%
WA	5,711,352	5,584,327	5,404,867	5,389,101	5,108,537	4,788,329	4,284,442	3,739,353	3,354,672	3,126,429	-45.3%	-6.8%
WI	4,268,149	4,379,080	4,216,898	4,126,766	3,886,349	3,583,119	2,967,994	2,584,485	2,308,939	2,136,600	-49.9%	-7.5%
WV	2,566,449	2,516,781	2,338,899	2,266,420	1,962,710	1,671,252	1,401,655	1,184,585	1,034,257	927,123	-63.9%	-10.4%
WY	419,592	426,148	429,385	439,169	406,781	385,632	351,634	310,326	283,944	272,995	-34.9%	-3.9%
All States	257,900,957	260,466,873	251,772,637	244,487,752	227,810,951	216,000,368	192,695,507	168,859,402	153,968,339	143,390,951	-44.4%	-6.9%

